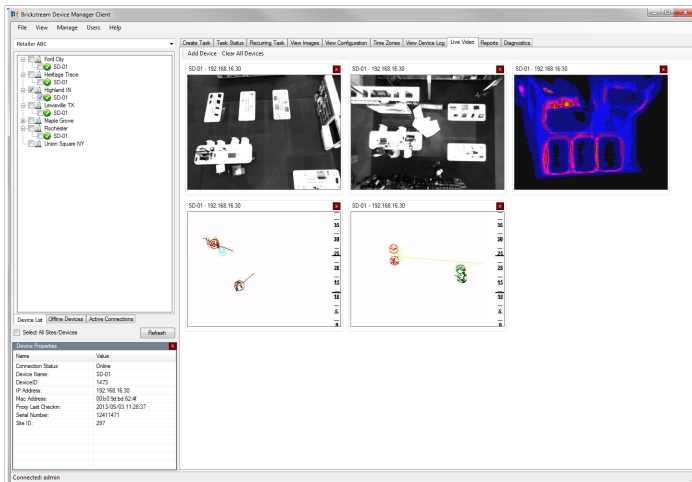


FLIR BRICKSTREAM[®]

DEVICE MANAGER

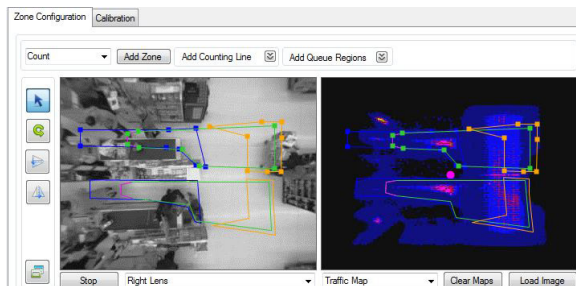


DEVICE CONFIGURATION & MANAGEMENT

Brickstream Device Manager is command central for all Brickstream devices, and enables users to quickly access, manage, configure, and troubleshoot devices across multiple locations.

A central dashboard console displays the current status of all devices and supports real-time or scheduled configuration changes and device maintenance.

With Brickstream Device Manager, all devices can be managed without direct access to in-store networks. This eliminates the need to individually update each device when making changes. Instead, you can create a single task and apply it to multiple devices.



Brickstream Device Manager also enables real-time monitoring of the field of view of all Brickstream Devices. Industry leading security features ensure management, monitoring, and reporting, with multi-level access, privacy and secure operation within your network, and all data is XML based for easy integration into other reporting and forecasting tools.

ADVANTAGES

Brickstream Device Manager drastically reduces deployment and operational management time, enabling you to realize:

- **Reduced deployment and operational management time for a faster return on investment.**
- **One-touch, remote sensor configuration, minimizing time for operational employees to get the deployment completed and greater employee productivity.**
- **Centralized sensor management, configuration and upgrades**

KEY FEATURES

- Implement enterprise-wide changes to devices without touching each device
- Control devices remotely to capture view areas, define 3D objects and calibrate the devices as needed
- Automate video capture and view live store activity from virtually anywhere
- Automate bulk operations such as data delivery, scheduling image and video captures for validation, video quality and more
- Troubleshoot devices by viewing diagnostic reports on queue activity, traffic, and behavior intelligence
- View intra-day and historical reports on core traffic metrics via an easy to use and customizable web application.
- Visualize store traffic and dwell areas using traffic maps (also known as heat maps)
- Upgrade firmware, auto-register and remove devices from service as required
- Access sensor details on a per-sensor or system wide basis
- Create, configure, edit zones.
- Organize devices into a hierarchical structure (by entire enterprise, region or by specific site)
- Provide automatic time synchronization between location local time and the server network time

Operating System	Windows Server 2008 or later Minimum 2GB RAM* Minimum 100GB HDD*
Database Server	SQL Server 2008 or later
Web Browser (for monitoring and reporting)	IE 11 or later Firefox 6 or later Chrome

*minimum requirements. More resources may be needed as number of devices and users increase.

Atlanta Office:

FLIR Integrated Imaging Solutions Inc.
2 Sun Court NW
Suite 400
Norcross, GA 30092
T: +1 240 302 5415

Americas:
Sales Inquiries:
david.cereijo@flir.com
Phone: +1 240 302 5415

EMEA:
Sales Inquiries:
stefan.eichblatt@flir.com
Phone: +49 30 4432 7777

APAC:
Sales Inquiries:
justin.thing@flir.com
Phone: +65 3157 1750

China
Sales Inquiries:
jasmine.xue@flir.com
Phone: +86-21-6165 2218

©2018 FLIR® Integrated Imaging Solutions Inc. All rights reserved.

Names and marks appearing on the products herein are either registered trademarks or trademarks of FLIR® Systems, Inc. and/or its subsidiaries.